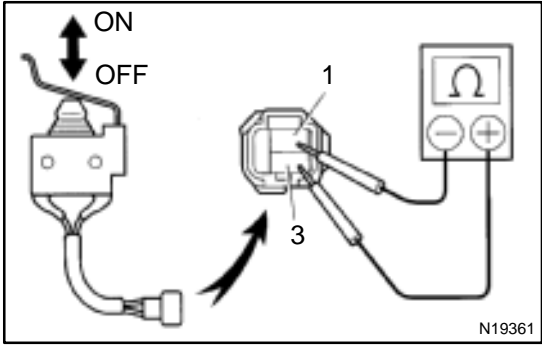


INSPECTION

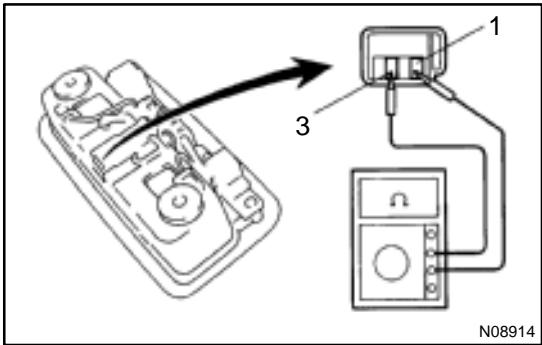
1. INSPECT DOOR COURTESY SWITCH CONTINUITY (See page BE-35)



2. INSPECT LUGGAGE DOOR COURTESY SWITCH CONTINUITY

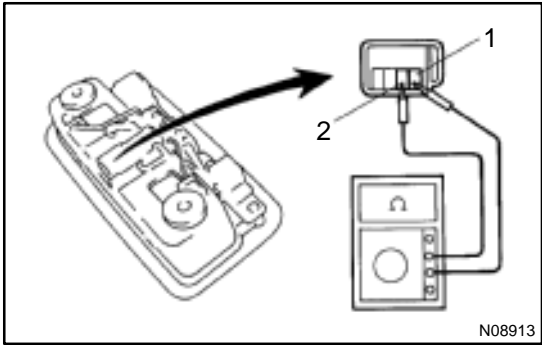
- Check that there is continuity between terminals on the switch side connector with the switch ON (switch pin released : opened door).
- Check that there is no continuity between terminals on the switch side connector with the switch OFF (switch pin pushed in : closed door).

If operation is not as specified, replace the switch.



3. Interior Light Switch: INSPECT MAP LIGHT ASSEMBLY CONTINUITY

Switch position	Tester connection	Specified condition
DOOR	1 – 3	Continuity
OFF	–	No continuity



4. Map Light Switch: INSPECT MAP LIGHT ASSEMBLY CONTINUITY

Switch position	Tester connection	Specified condition
OFF	–	No continuity
*ON	1 – 2	Continuity

* Set to the interior light switch to OFF or DOOR.

If continuity is not as specified, replace the light assembly or bulb.